

L 35

PRODUCT FEATURES

- High Max. SPL (up to 123 dB per single cabinet)
- 100° x 20° directivity
- Clear and natural sound
- Very light weight (3.6 kg)
- Ultra-compact unobtrusive design
- Flexible and scalable system approach
- Built-in two-way input signal switch
- Integrated three-point rigging system
- Rigid front baffle made of die-cast aluminum
- Black and white color finish
- Available as indoor and outdoor version

SPECIFICATIONS

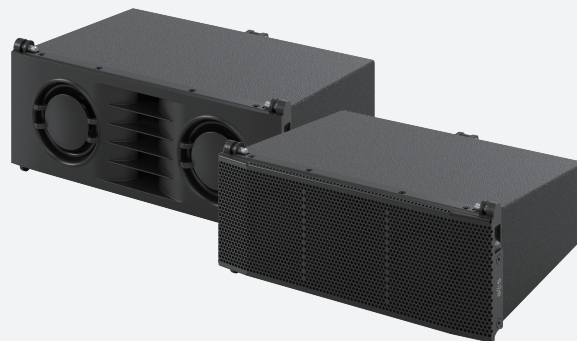
ACOUSTICAL	
Frequency range (-3 dB) ¹	110 Hz - 18 KHz
Frequency range (-10 dB) ¹	95 Hz - 19 KHz
Coverage angles (-6 dB) [H x V]	100° x 20°
Nominal impedance	16 Ω
Sensitivity ¹	91 dB
Peak power	400 W
Continuous power ²	100 W
Maximum Peak SPL ³	123 dB
System type	2-way passive system
Crossover frequency	2.2 kHz
Transducers	LF: 2 x 3.5" drivers (1" voice coil) MHF: 1" compression driver (1.4" voice coil)
Enclosure type	Vented box
Connectors	1 x Input signal 1 x Link output Neutrik speakON® NL4
Wiring	Input signal: switchable 1+/1- or 2+/2- Link output: 1+/1- and 2+/2-
MECHANICAL	
Product dimensions [H x W x D] (Including rigging)	131 x 312 x 234 mm
Net weight	3.6 kg
Packaging dimensions [H x W x D]	225 x 415 x 311 mm
Total weight	4.7 kg
Cabinet	12 mm plywood with die-cast aluminum baffle
Cabinet finishing	Black or white polyurea coating
Grille	Powder coated perforated steel
Rigging	Three-point rigging system: two front and one rear 6 mm locking pins
Splay angles	0°, 2.5°, 5°, 7.5°, 10°
Accessories	
Bumper frame	L 35 BF
U-bracket	L 35 UB
Stacking frame for B15 subwoofer	B 15 Sfi L35
Stacking frame for B18 subwoofer	B 18 Sfi L35
Pole bar	SPS 20

¹ Whole space, 1W / 1m, on axis

² According to EIA-426B Standard (based on RMS Voltage)

³ Max Peak SPL = Sensitivity + 10log₁₀(Continuous Power) + 12 dB Crest Factor

All product specifications are subject to change without prior notice.



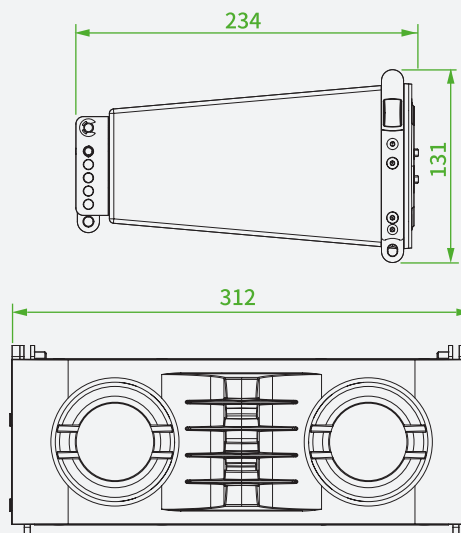
PRODUCT DESCRIPTION

L 35 is an extremely compact line array cabinet composed of two 3.5" drivers and a 1" compression driver, offering a horizontal directivity of 100° and vertical directivity of 20°. With a weight of only 3.6 kg, a single unit can reach up to 123 dB max. SPL with excellent sound. The nominal impedance of 16 Ω allows connecting multiple cabinets to a single amplifier channel.

Up to two audio signals are input and linked through two speakON® NL4 connectors and are selectable with the built-in two-way switch. The three-point rigging system is secured with 6 mm locking pins and enables to set 0°, 2.5°, 5°, 7.5° and 10° splay angles between the cabinets.

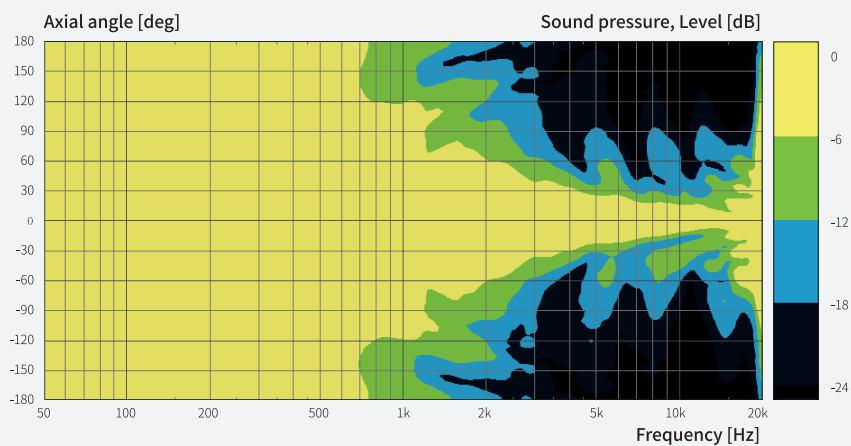
The indoor version uses a vented enclosure. The outdoor version, L 35 R, has sealed rear panels for a closed-box configuration. It includes also a front steel grille and weatherproof connectors. Both versions are available in black and white colors.

PRODUCT DRAWINGS



DIRECTIVITY PLOTS

Vertical Directivity



Horizontal Directivity

