

L35 FS R

PRODUCT FEATURES

- High Max. SPL (up to 124 dB per single subwoofer)
- Deep and powerful sound down to 57 Hz
- Very light weight (8.4 kg)
- Ultra-compact unobtrusive design
- Flexible and scalable system approach
- Built-in two-way input signal switch
- Integrated three-point rigging system
- High quality plywood cabinet with black or white polyurea coating
- IPX4 protection

SPECIFICATIONS

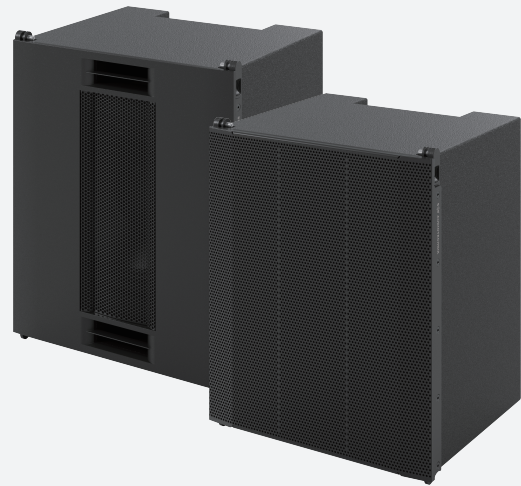
ACOUSTICAL	
Frequency range (-3 dB) ¹	65 Hz - 123 Hz
Frequency range (-10 dB) ¹	57 Hz - 165 Hz
Coverage angles (-6 dB) [H x V]	Omnidirectional
Nominal impedance	8 Ω
Sensitivity ¹	86 dB
Peak power	1200 W
Continuous power ²	300 W
Maximum Peak SPL ³	124 dB
System type	1-way passive system
Transducers	1 x 8" driver (2.6" voice coil)
Enclosure	Vented box
Connectors	Input signal: 1 x weatherproof Neutrik speakON® NLT4MP Link output: 1 x weatherproof Neutrik speakON® NLT4MP
Wiring	Input signal: switchable 1+/1- or 2+/2- Link output: 1+/1- and 2+/2-
MECHANICAL	
Product dimensions [H x W x D](Including rigging)	379 x 315 x 248 mm
Net weight	8.4 kg
Packaging dimensions [H x W x D]	473 x 410 x 340 mm
Total weight	9.5 kg
Cabinet	12 mm plywood
Cabinet finishing	Black or white polyurea coating
Grille	Powder coated perforated steel
Hardware	Additional front steel grille
Rigging	Three-point rigging system: two front and one rear 6 mm SE Audiotechnik® locking pins
Splay angles	0°
ACCESSORIES	
Bumper frame	L 35 BF

¹ Whole space, 1W / 1m, on axis

² According to EIA-426B Standard (based on RMS Voltage)

³ Max Peak SPL = Sensitivity + 10log₁₀(Continuous Power) + 12 dB Crest Factor

All product specifications are subject to change without prior notice.



PRODUCT DESCRIPTION

L 35 FS R is the waterproof version of the L35 FS with IPX4 rating. It is an ultra-compact single 8" vented flyable bass extension, available as both an 8 Ω and a 16 Ω version. It produces 124 dB Peak SPL and delivers the same ease of operation and setup as the L 35 line array modules. L 35 FS R can be used in either stand-alone mode or in combination with ground stacked subwoofers in larger setups. It is available in black or white polyurea coating with a dedicated protective grille for outdoor use.

PRODUCT DRAWINGS

