

L 65 FS

PRODUCT FEATURES

- High Max. SPL (up to 131 dB per single subwoofer)
- Deep and powerful sound down to 45 Hz
- Lightweight (30 kg)
- Compact unobtrusive design
- Flexible and scalable system approach
- Integrated four-point rigging system
- Rigid front baffle made of die-cast aluminum

SPECIFICATIONS

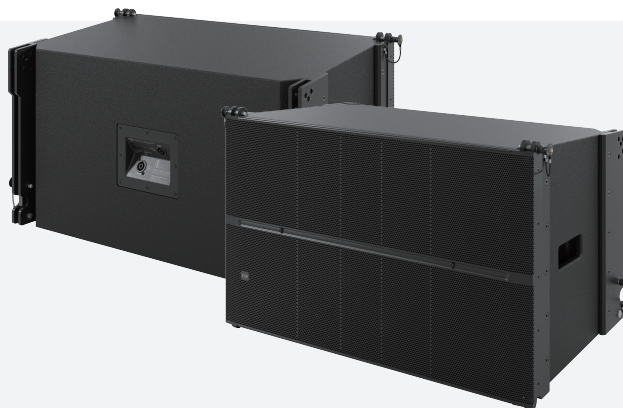
ACOUSTICAL	
Frequency range (-3 dB)¹	60 Hz - 200 Hz
Frequency range (-10 dB)¹	45 Hz - 275 Hz
Coverage angles (-6 dB) [H x V]	Omnidirectional
Nominal impedance	8 Ω
Sensitivity¹	92 dB
Peak power	2000 W
Continuous power²	500 W
Maximum Peak SPL³	131 dB
System type	1-way passive system
Transducers	1 x 15" woofer (4" voice coil)
Enclosure type	Vented box
Connectors	Input / Link signal: two Neutrik speakON® NL4
Wiring	Pins 1+/1- (both NL4): drivers Pins 2+/2- (both NL4): link signal

MECHANICAL	
Product Dimensions [H x W x D] (Including rigging)	447 x 766 x 385 mm
Net weight	30 kg
Packaging dimensions [H x W x D]	573 x 810 x 480 mm
Total weight	33 kg
Cabinet	12 mm plywood with die-cast aluminum baffle
Cabinet finishing	Black or white polyurea coating
Grille	Powder coated perforated steel
Hardware	Side handles in plywood embedded in cabinet
Rigging	Four-point rigging system: two front and two rear 8 mm SE Audiotechnik® locking pins
Splay angles	0°, 1°, 2°, 3°, 4°, 6°, 8°

ACCESSORIES	
Bumper frame	L 65 BF
Under frame adapter	L 65 UFB

¹ Whole space, 1W/ 1m, on axis (depending on amplifier preset)
² According to EIA-426B Standard (based on RMS Voltage)
³ Max Peak SPL= Sensitivity+ 10log₁₀(Continuous Power) + 12 dB Crest Factor

All product specifications are subject to change without prior notice.



PRODUCT DESCRIPTION

The flyable subwoofer L 65 FS consists of a 15" woofer and ensures a dynamic and powerful low-end extension down to 45 Hz with up to 131 dB SPL. The nominal impedance of 8 Ω provides the possibility to connect several subwoofers to a single amplifier channel. Its rear panel includes two speakON® NL4 connectors for input and link signals.

Following the L-Line design, it includes a four-point rigging system, which allows 0°, 1°, 2°, 3°, 4°, 6° and 8° splay angles and uses 8 mm locking pins. With only 30 kg of weight, the L 65 FS flyable subwoofer is not only compact, easy to handle but also fully integrated in the system approach of L-Line.

PRODUCT DRAWINGS

