

# SMX 12A

## PRODUCT FEATURES

- 12" high efficiency woofer
- 1" compression driver coaxially mounted
- Concentric waveguide
- 35° angled front
- Class-D amplification with DSP
- Recessed I/O panel, no connectors, switches oder LEDs visible to public
- Gain and preset selector, 8 factoty settings
- Octopus Feet for excellent grip
- 3-handles for easy handling in all situations
- 2 x M10 Flypoints
- Polyurea coating
- Rugged front grill with foam backing

## SPECIFICATIONS

ACOUSTICAL	
Frequency range (-3 dB) <sup>1</sup>	65 Hz - 17 kHz
Frequency range (-10 dB) <sup>1</sup>	60 Hz - 20 kHz
Coverage angles (-6 dB) [H x V]	80° x 80°
Maximum Peak SPL <sup>1</sup>	129 dB
System type	2-way coaxial system
Crossover frequency	1.4 kHz
Transducers	Coaxial driver with: LF: 1 x 12" driver (3" voice coil) HF: 1" compression driver (1.7" voice coil)
Enclosure type	Vented box
AMPLIFICATION	
Type	2 channel, class-D with SMPS
Total power <sup>2</sup>	484 W
Output power (per channel)	LF: 416 W @ 6.5 Ω HF: 68 W @ 14 Ω
Protection	Short circuit, overheating, overcurrent and overvoltage, multiband limiter
Connectors	Input signal: balanced XLR 3-pin female, or balanced 6.5 mm TRS jack Link output: balanced XLR 3-pin male Power input: powerCON® 20A Power link output: powerCON® 20A
Operating Voltage	100 VAC - 240 VAC, 50 - 60 Hz
Wiring	Pin N: Neutral Pin L: Conductor Pin E: Ground
Input sensitivity	0 dBu
DSP	48 kHz/24 bit with extended dynamics Processing latency: 1.1 ms
Processing	Level, factory EQ presets
User controls	Power: ON/OFF switch Level: 8-position rotary knob (-50, -20, -10, -4, -2, 0, +2, +4) DSP presets: 8-position rotary knob
MECHANICAL	
Product dimensions [H x W x D](Including rigging)	368 x 450 x 575 mm
Net weight	22 kg
Packaging dimensions [H x W x D]	447 x 535 x 660 mm
Total weight	25 kg
Cabinet	15 mm plywood
Cabinet finishing	Black polyurea coating
Grille	Powder coated perforated steel
Hardware	1 top and 2 side handles embedded in cabinet Rubber feet 2 x M10 for U-bracket mounting



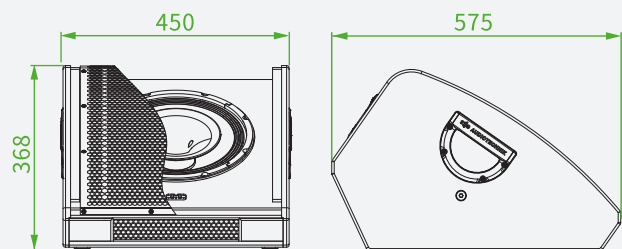
## PRODUCT DESCRIPTION

"One key to good performance is a good monitor."

The SMX 12A is a self-powered 2-way coaxial monitor. Due to its compact dimensions and its acoustic characteristics, the SMX 12A is a powerful tool for a wide range of monitoring and sound reinforcement requirments on and off stage. Eight DSP presets simplify the setup and tuning of the system. Furthermore, small to mid-size PA applications can be successfully achieved with an additional subwoofer for low frequency extension.

The M10 flying points and the practical design allow versatile and flexible permanent and non-permanent installations. With the additional SMX 12 UB U-bracket, the SMX 12A can be mounted to a wall, ceiling, truss or speaker stand. The optional SMX 12A TC padded cover protects the mo nitor during transport and storage.

## PRODUCT DRAWINGS

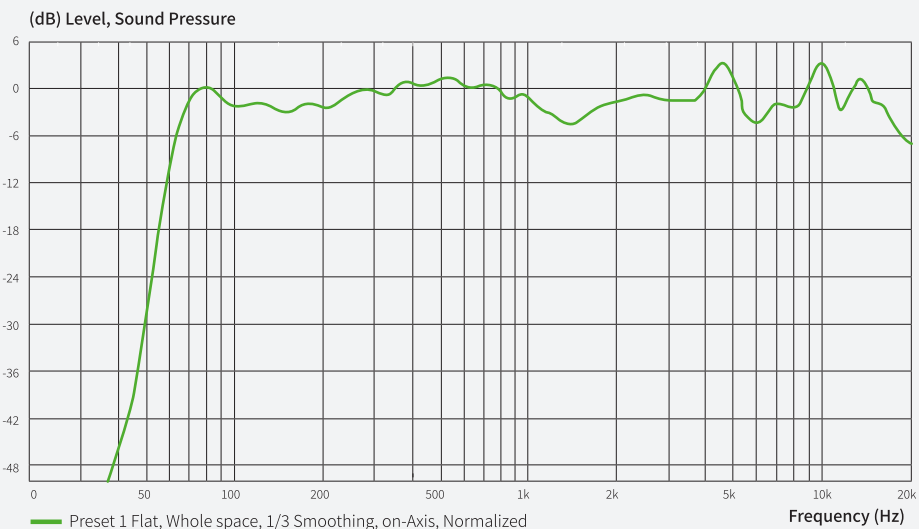


## ACCESSORIES

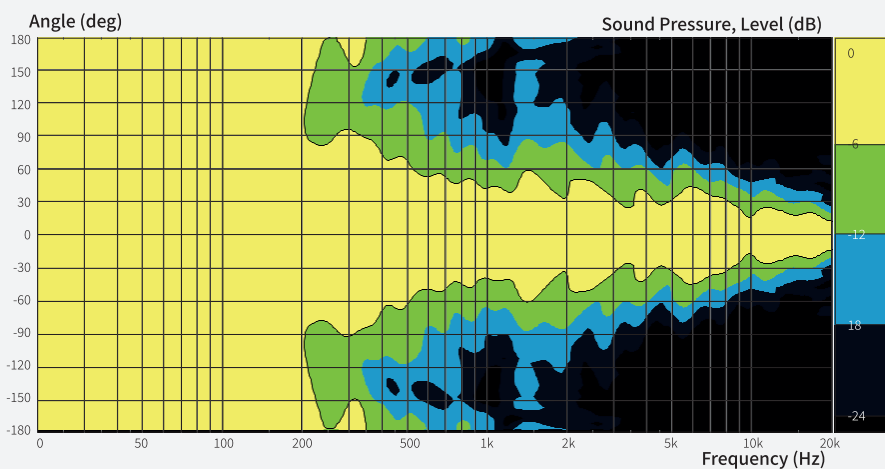
U-bracket	SMX 12 UB
Transport cover	SMX 12A TC
Pole bar	SPS 20
M10 screw to 35mm pole socket adaptor	PS35

<sup>1</sup> Measured with 12 dB Crest factor Pink Noise, Whole space  
<sup>2</sup> Total power value is the sum of all individual channel output power  
All product specifications are subject to change without prior notice.

## FREQUENCY RESPONSE CURVE



## VERTICAL DIRECTIVITY PLOT



## HORIZONTAL DIRECTIVITY PLOT

