

**YOUR** Stage.  
Sound.  
Monitoring.



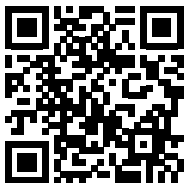
**s||e**<sup>®</sup>  
AUDIOTECHNIK

# The Sound in Focus.

**On stage, precise and  
balanced sound is crucial.**

SMX monitors meet every challenge and are suitable for all groups of instruments – from vocals and guitars to keyboards and drums. SMX monitors reproduce your monitor mix exactly as you need it. Count on it:

**Your Sound, Your Performance!**



[smx.se-audiotechnik.de/en/](https://smx.se-audiotechnik.de/en/)





# Your Gig. Your Moment.

## Clear and Precise

SMX monitors enable clear and precise audio playback. Every note and every detail are audible, allowing you to fully focus on your music.

## Powerful and Dynamic

Whether soft or loud – SMX monitors always play with the appropriate dynamics. They handle any volume and offer consistent sound without quality loss.

## Reliable and Stable

SMX monitors are engineered for longevity. Their robust construction and reliable performance ensure they stand the test of time.

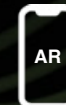
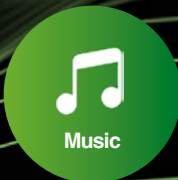
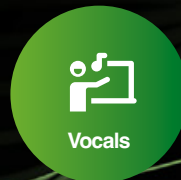
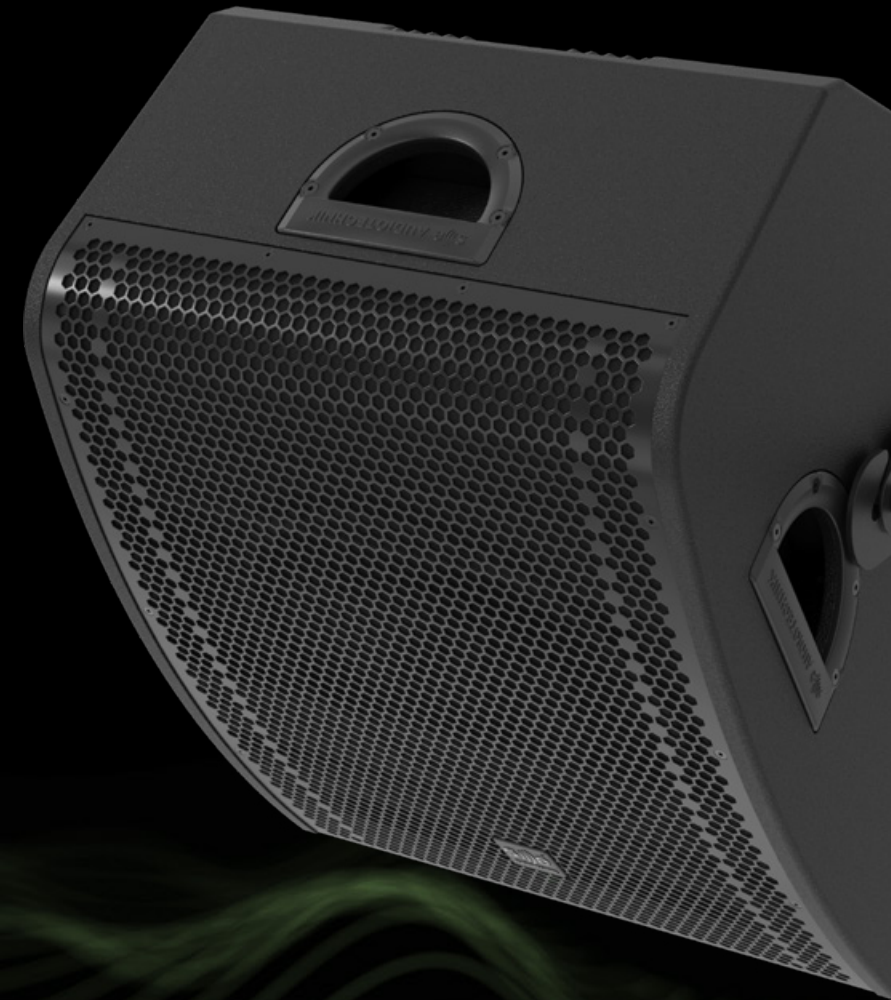


# SMX-Monitors Get to the Point.

## Hear what truly matters – without distractions.

The SMX monitors are coaxial systems that emit all frequencies from a single point, ensuring precise sound reproduction. Their uniform sound field coverage ensures that the sound remains consistent and is less diffusely emitted. This enhances audibility, reduces crosstalk, and minimizes feedback.

**Everyone hears what they need** without being disturbed by other monitors. This keeps the stage level controllable. With proper impulse response and high speech intelligibility, SMX monitors are suitable for percussive and harmonic instruments as well as for speech and music. They provide the necessary versatility and precision to optimally support every performance.



Experience  
SMX 12 live now.

## Versatile. Flexible. Adaptable.

SMX monitors are more than just stage monitors. Thanks to their sophisticated design and comprehensive accessories, they can also be used as front-fill, side-fill, or even as PA speakers and delay lines. Equipped with M10 flying points and accessories like the SMX U-bracket, the monitors can be mounted on stand rods, trusses, ceilings, or walls. This makes them multifunctional systems for various sound reinforcement tasks.

## Robust. Durable. Reliable.

SMX monitors are built for the tough demands of stage use. Their robust plywood cabinet construction, combined with a durable Polyurea coating, ensures longevity. Every component is carefully processed and designed for reliability. The concealed connector panel not only contributes to aesthetics but also enhances safety, functionality, and durability.

## Intuitive. Simple. Fast.

Whether SMX 12 or the active version SMX 12A – both offer easy and intuitive operation. The SMX 12A is equipped with an integrated 2-channel Class-D amplifier, tailored to the speakers, offering eight DSP factory settings. This enables quick setup and uncomplicated handling without additional equipment. Ergonomically designed handles and a well-thought-out design make transport and installation easy. This user-friendliness saves time and effort, allowing everyone to focus on what really matters – delivering the best performance.



# Two Options.

**The versatile SMX monitors are available in two versions:** Passive (SMX 12) for maximum flexibility with external amplifiers and self-powered (SMX 12A) with an integrated amplifier and DSP for quick, uncomplicated use. For even more possibilities, both can be seamlessly combined with the B-Line subwoofers.

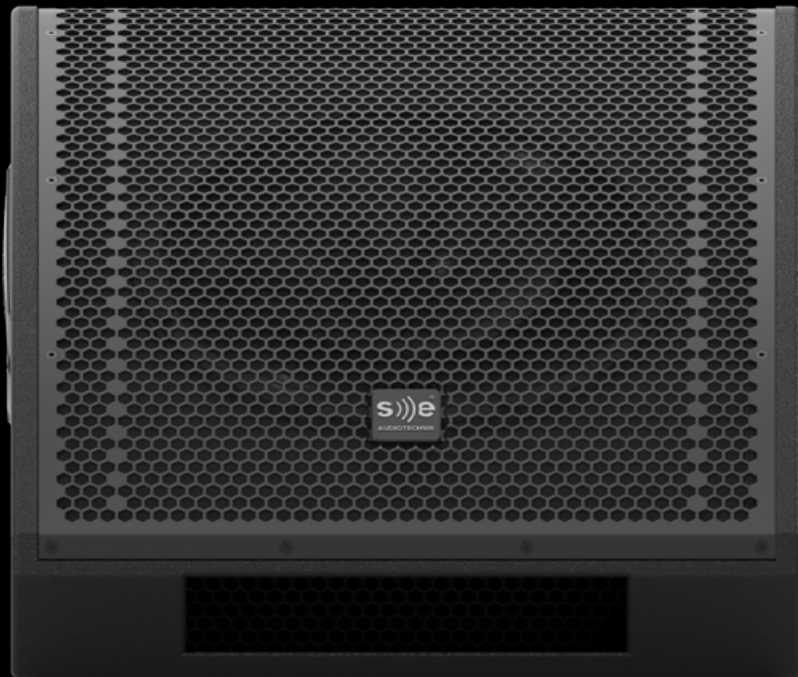
## Passive SMX 12

### Maximum Flexibility

For setups with external amplifiers and individual requirements.

### Diverse System Design

Direct integration and control with I-Line and L-Line amplifiers.



## Self-Powered SMX 12 A

### Plug & Play

Ready to use with the integrated amplifier and clever system options.

### Easy Handling

Tailored sound profiles (presets) and intuitive control for all applications.



# Our SMXs



## SMX 12 – The Versatile One

This passive 2-way coaxial monitor with bass reflex system and a highly efficient combination of a 12" woofer (3" voice coil) and 1" tweeter (1.7" voice coil) delivers powerful, transparent sound. With M10 flying points, recessed handles, U-bracket accessories, and a concealed connector panel, it is flexible to use and easy to transport. The Octopus feet ensure a secure stand and reduce vibrations. An optional transport cover provides additional protection.

Size	<b>12" (Woofer) 1" (Tweeter)</b>
Voice Coil	<b>3" (Woofer) 1,7" (Tweeter)</b>
Nominal Load Capacity	<b>400 watts</b>
Max. SPL	<b>Up to 136 dB</b>

Passive with Link Output



## SMX 12A – The Complete Solution

This self-powered 2-way coaxial monitor offers all the advantages of the passive version – plus an integrated amplifier with DSP for maximum plug-and-play convenience. With solid performance, protection circuits, and eight sound profiles, the monitor can be set up and used effortlessly. Just like the SMX 12, it excels as a stage monitor, side and front-fill, or as a PA system – full-range or in combination with, for example, B-Line basses.

Size	<b>12" (Woofer) 1" (Tweeter)</b>
Voice Coil	<b>3" (Woofer) 1,7" (Tweeter)</b>
Total Power	<b>480 watts</b>
Max. SPL	<b>Up to 129 dB</b>

Integrated DSP with 8 Sound Profiles





# Your Sound. Your Stage.

The SMX series delivers clear and precise sound on point and adapts flexibly to your requirements. The passive version offers full control in complex setups, while the self-powered variant with built-in amplifier and DSP enables quick, precise results. Robust, mobile, and versatile – made for practical use and the challenges on and off stage.

SMX monitors integrate into the system approach of SE AUDIOTECHNIK and can be seamlessly combined with amplifiers and other speaker series. They are ideal as stage monitors, front-fill, side-fill, and PA speakers.

**Focus on your performance – we take care of the sound.**



**SE AUDIOTECHNIK**  
Neuenhofer Str. 42-44  
42657 Solingen  
Germany

☎ +49 212 – 38226 – 0  
✉ [info@se-audiotechnik.de](mailto:info@se-audiotechnik.de)

Facebook: [/seaudiotechnik](#)  
Instagram: [/se\\_audiotechnik](#)  
LinkedIn: [/se-audiotechnik](#)  
YouTube: [/@seaudiotechnik9658](#)  
X: [/seaudiotechnik](#)  
Pinterest: [/seaudiotechnik](#)



[smx.se-audiotechnik.de/en/](https://smx.se-audiotechnik.de/en/)



[boom.se-audiotechnik.de/en/](https://boom.se-audiotechnik.de/en/)

